



Comparison of Color Doppler Imaging Criteria for the Ophthalmic Artery and Central Retinal Artery in Infants with Retinopathy of Prematurity with and Without Plus Disease

Marzieh Soleimani¹, Seyed Ehsan Ghetmiri¹ and Mohammad Hossein Ahrar Yazdi^{1,*}

¹Department of Radiology, Shahid Sadoughi University of Medical Sciences, Yazd, Iran

*Corresponding author: Department of Radiology, Shahid Sadoughi University of Medical Sciences, Yazd, Iran. Email: mohammadhosseinahrar2019@gmail.com

Received 2020 April 07; Revised 2021 March 30; Accepted 2021 April 14.

Abstract

Background: Color Doppler imaging (CDI) is a non-aggressive and safe technique for the clinical management of retinal diseases. Recently, the number of infants with retinopathy of prematurity (ROP) has increased due to the incidence of premature births.

Objectives: This study aimed to compare the CDI criteria for the ophthalmic artery (OA) and central retinal artery (CRA) in ROP infants with and without plus disease.

Patients and Methods: In this case-control study, 42 premature infants (21 infants with plus disease and 21 infants without plus disease) underwent CDI. The arterial CDI parameters, including end-diastolic velocity (EDV), pulsatility index (PI), resistance index (RI), and peak systolic velocity (PSV), were measured in these patients. After collecting the data, *t*-test and chi-square tests were used for data analysis. $P < 0.05$ was considered to be statistically significant.

Results: The mean EDV of CRA in patients with and without plus disease was 4.35 ± 1.00 and 5.27 ± 1.02 cm/sec, respectively ($P = 0.005$). The mean PSV of CRA in patients with and without plus disease was 15.65 ± 3.35 and 18.39 ± 4.39 cm/sec, respectively ($P = 0.029$). However, no significant difference was found between the two groups in terms of PSV or EDV of OA ($P > 0.05$). Also, no significant difference was observed between the two groups considering the RI and PI of CRA and OA ($P > 0.05$).

Conclusion: According to the findings of this study, CDI criteria, such as EDV and PSV of CRA, were significantly lower in infants with plus disease as compared to those without plus disease. Since detecting the early stages of plus disease is a challenge for ophthalmologists, assessment of these criteria can be helpful for differentiation of these two subgroups of patients. However, further studies with a larger sample size are needed to determine the cutoff value.

Keywords: Color Doppler Criteria, Ophthalmic and Central Retinal Artery Ultrasound, Retinopathy of Prematurity, Plus Disease, Non-Plus Disease

1. Background

Retinopathy of prematurity (ROP) is an abnormal retinal neovascularization in infants with a low birth weight (1). ROP is recognized as a cause of blindness in children (2). This disease generally has two phases. Phase 1 is defined as the onset of ROP with delay in retinal vascular development after premature birth, and phase 2 is characterized by hypoxia, inducing the release of some factors (hypoxia factors) that stimulate new blood vessel growth (3). The cause of ROP varies in different countries and is influenced by many factors (2, 4). Plus disease is a major cause of ROP (5). Generally, progression of plus disease and retinal vascular changes are prominent features of ROP (6).

Color Doppler imaging (CDI) is a non-aggressive and

safe technique for the clinical management of retinal diseases (7-9). It is applied to characterize several ophthalmic disorders, including diabetic retinopathy, optic atrophy, carotid occlusive disease, and intraorbital arteriovenous malformations. This modality evaluates the circulatory parameters of retrobulbar blood vessels, central retinal vein, central retinal artery (CRA), and ophthalmic artery (OA) (7-14).

The prevalence of ROP seems to vary in different areas of Iran (15), and the number of infants with ROP is increasing due to the incidence of premature births. Also, few studies have been conducted on this subject.

2. Objectives

This study aimed to compare the CDI criteria for OA and CRA vessels in ROP patients with and without plus disease.

3. Patients and Methods

This case-control study was conducted on premature infants with a gestational age < 37 weeks or a birth weight < 1500 g, who were referred to the ROP Clinic of Shahid Sadoughi Hospital, Yazd, Iran, during 2018-2019. After taking informed consent from the infants' parents, this study was approved by the Ethics Committee of Shahid Sadoughi University (no.: 5175).

The first ophthalmologic examination was performed four to six weeks after birth. The examinations were performed once every week or every two weeks until the retinal vessels were completely examined. Hospitalized and ROP patients with a history of eye treatment, such as laser therapy or intraocular injection, were excluded from the study. After the definitive diagnosis of ROP, information, including age, weight at birth, plus disease, and initial stage of ROP, was extracted from the patients' medical records.

Next, infants with ROP (21 infants with plus disease and 21 infants without plus disease) underwent CDI using the linear transducers of a Vivid-6 unit (7.5 MHz; Munich, Germany) at a Doppler frequency of 5 MHz. The linear probe was placed in a vertical position perpendicular to the eye globe on the right side of the closed eyelid, using a sterile coupling gel. Arterial Doppler parameters, such as end-diastolic velocity (EDV), pulsatility index (PI), resistance index (RI), and peak systolic velocity (PSV), were measured for the patients. However, the cutoff point could not be measured due to the small sample size.

3.1. Statistical Analysis

Data were entered into SPSS version 22. Independent t-test was used to compare the groups with and without plus disease in terms of parameters, such as PSV, EDV, RI, PI, gestational age, birth weight, and infant's age. Moreover, Chi-square test was used for evaluating the gender distribution of the patients. P-value < 0.05 was considered statistically significant.

4. Results

The current study was conducted on 42 patients with ROP. In terms of gender, 54.7% of the patients were female,

and 45.3% were male ($P = 0.63$). Parameters, such as gestational age, birth weight, and infant's age, are presented in [Table 1](#).

Table 1. Parameters in the Groups with and Without Plus Disease, Including Gestational Age, Birth Weight, and Infant's Age

Parameters	Number	Mean \pm SD	P-Value ^a
Gestational age, wk			0.29
With plus disease	21	28.52 \pm 2.27	
Without plus disease	21	29.19 \pm 1.72	
Birth weight, g			0.42
With plus disease	21	1153 \pm 490	
Without plus disease	21	1260 \pm 362	
Infant's age, wk			0.46
With plus disease	21	35 \pm 1.3	
Without plus disease	21	34 \pm 1.5	

Abbreviation: wk, week.

^aIndependent t-test.

As shown in [Table 1](#), no significant difference was observed between the two groups considering the gestational age, birth weight, or infant's age ($P > 0.05$). Also, comparison of the two groups regarding the arterial CDI parameters, including PSV, EDV, RI, and PI, is presented in [Table 2](#).

As shown in [Table 2](#), there was a significant difference between the two groups regarding PSV and EDV of CRA ($P < 0.05$). However, no significant difference was found between the two groups in terms of PSV or EDV of OA ($P > 0.05$). Also, no significant difference was observed between the groups considering the RI or PI of CRA and OA ($P > 0.05$). [Figure 1A](#) and [B](#) show the color Doppler images of CRA in patients with plus disease.

5. Discussion

ROP is a common disease in preterm newborns with a very low birth weight ([16](#)). This vascular disorder is related to an altered blood flow ([16](#)). CDI has been proposed as a promising tool for the diagnosis of different eye diseases ([17](#)). However, some studies have reported that CDI is not clinically beneficial for the management of ROP and plus disease in premature infants ([6](#)). Moreover, there is little information regarding the hemodynamic characteristics of retinal perfusion in preterm infants ([14](#)). In this regard, some studies have revealed that the value of CDI is lower in preterm infants than in healthy adults ([14](#)). Besides, eval-

Table 2. Comparison of Groups with and Without Plus Disease Regarding Arterial Doppler Imaging Parameters

Parameters	Type of Artery	Number	Groups	Mean \pm SD	P-Value ^a
PSV, cm/sec	OA	21	With plus disease	22.04 \pm 4.95	0.11
		21	Without plus disease	25 \pm 6.78	
	CRA	21	With plus disease	15.65 \pm 3.35	0.029
		21	Without plus disease	18.39 \pm 4.39	
EDV, cm/sec	OA	21	With plus disease	4.91 \pm 1.5	0.1
		21	Without plus disease	5.68 \pm 1.47	
	CRA	21	With plus disease	4.35 \pm 1.00	0.005
		21	Without plus disease	5.27 \pm 1.02	
RI	OA	21	With plus disease	0.77 \pm 0.05	0.97
		21	Without plus disease	0.77 \pm 0.05	
	CRA	21	With plus disease	0.72 \pm 0.05	0.65
		21	Without plus disease	0.72 \pm 0.05	
PI	OA	21	With plus disease	1.37 \pm 0.22	0.82
		21	Without plus disease	1.18 \pm 0.23	
	CRA	21	With plus disease	1.18 \pm 0.23	0.37
		21	Without plus disease	1.24 \pm 0.2	

^aAbbreviations: CRA, central retinal artery; EDV, end-diastolic velocity; OA, ophthalmic artery; PI, pulsatility index; PSV, peak systolic velocity; RI, resistance index.

^bIndependent *t*-test.

uation of CDI in premature infants is more difficult than adults (14).

In the present study, the CDI criteria were not evaluated among patients with and without ROP, because diagnosis of retinopathy and its stages can be well made by an ophthalmologist. Accordingly, we assessed the CDI criteria in ROP patients with and without plus disease and observed that the mean Doppler findings were lower in CRA than in OA. In this regard, Papacci et al. (18) assessed the Doppler sonography findings of blood flow velocity in CRA and OA during the neonatal period and found the decreased Doppler value for CRA as compared to OA. On the other hand, some studies reported that the value of CDI was higher in OA than in CRA (18-22); the findings of these studies are consistent with our study.

Moreover, the present results showed that the mean PSV of CRA was significantly higher in patients without plus disease as compared to those with plus disease. Besides, the mean PSV of OA was higher in the absence of plus disease. Holland et al. reported similar results and found that PSV was higher in the absence of plus disease. Hauch et al. (23) assessed the ocular blood flow changes in ROP patients with plus disease and observed significant differences in the PSV of CRA at baseline and at the time of plus

disease. Also, Kaiser et al. (22) reported that the mean PSV was significantly lower in CRA than in OA. Additionally, Ozcan et al. (24) reported that the mean PSV of OA in patients with ROP was significantly higher than those without ROP. The difference between studies by Ozcan et al. (24) and Keyser et al. and our study is that we did not include a control group.

In the current study, no significant differences were found in the RI of CRA and OA in premature infants with and without plus disease. In this regard, Niwald and Gralek (25) evaluated the blood flow of CRA and OA in preterm infants and observed that the RI of OA was significantly higher than CRA; however, the difference was not statistically significant. Holland et al. also used CDI for premature infants with ROP and did not observe any significant differences between premature infants with and without ROP regarding RI.

We observed a significant difference between the two groups with plus and without plus disease regarding the EDV of CRA. However, no significant difference was seen in the EDV of OA. Hauch et al. (23) also reported no significant difference regarding this parameter. Olufemi Adeyinka et al. (26) also found that the EDV of OA and CRA in glaucoma patients was significantly lower than the control group.

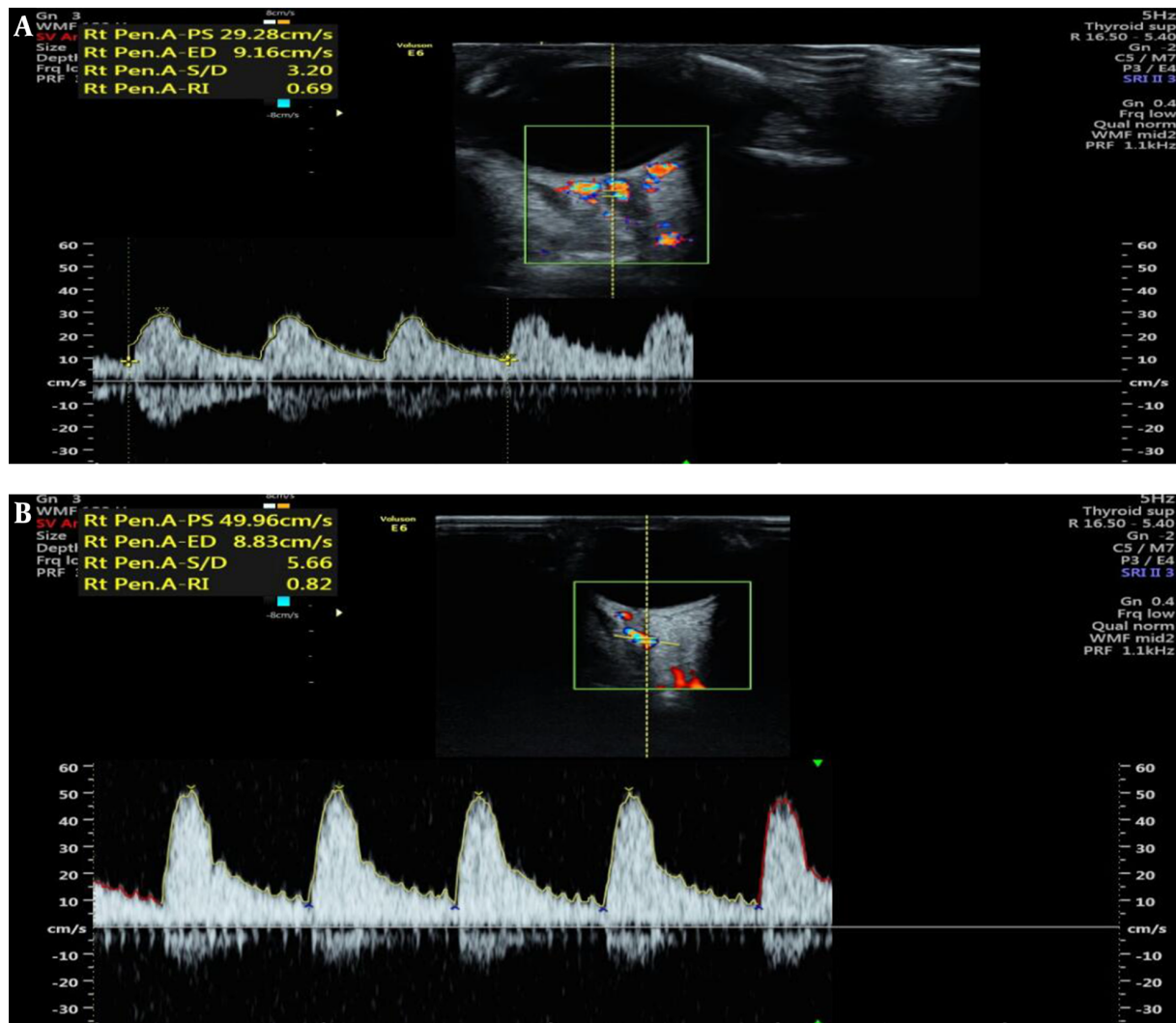


Figure 1. A and B, Color Doppler images of central retinal artery (CRA) in patients with plus disease. The sample was placed 2 mm behind the sclera at the center of the triangle formed by the optic nerve shadow (peak systolic velocity (PSV) was estimated at 29 cm/s, and end-diastolic velocity (EDV) was estimated at 9 cm/s).

Moreover, Ozcan et al. (24) reported no significant difference between patients with and without ROP regarding EDV. The difference between studies by Ozcan et al. (24) and Olufemi et al. and our study is that we did not include a control group. Also, we did not observe any significant differences between the two groups regarding PI. The mean PI of OA was higher than that of CRA in patients with plus disease. Papacci et al. (18) also reported that PI of CRA was remarkably lower than that of OA in the early neonatal period, which is consistent with our study.

According to the findings of the present study, CDI criteria, such as EDV and PSV of CRA, were significantly lower in infants with plus disease as compared to those without

plus disease. Since early detection of plus disease is a challenge for ophthalmologists, assessment of these criteria can be beneficial. However, further studies with a larger sample size are needed to determine the cutoff point.

Footnotes

Authors' Contributions: Mohammad Hossein Ahrar Yazdi designed current study. Marzieh Soleimani conducted study. Seyed Ehsan Ghetmiri wrote the manuscript.

Conflict of Interests: There is no conflict of interest

Ethical Approval: This study was approved by the Ethics Committee of Shahid Sadoughi University (no.: 5175).

Funding/Support: There is no funding

Informed Consent: Informed consent obtained from the infants' parents.

References

- Scott K, Kim D, Wang L. Telemedical Diagnosis of Retinopathy of Prematurity. *Am Acad Ophthalmol*. 2007;1-10.
- Gilbert C, Fielder A, Gordillo L, Quinn G, Semiglia R, Visintin P, et al. Characteristics of infants with severe retinopathy of prematurity in countries with low, moderate, and high levels of development: implications for screening programs. *Pediatrics*. 2005;115(5):e518-25. doi: [10.1542/peds.2004-1180](#). [PubMed: [15805336](#)].
- Smith LE. Pathogenesis of retinopathy of prematurity. *Growth Horm IGF Res*. 2004;14 Suppl A:S140-4. doi: [10.1016/j.gthr.2004.03.030](#). [PubMed: [15135797](#)].
- United Nations Development Programme (UNDP). *Human Development Report, 2004*. Oxford, United Kingdom: Oxford University Press; 2004.
- Wallace D. The Predictive Value of Pre-plus Disease in Retinopathy of Prematurity. *Arch Ophthalmol*. 2011;129(5):591-6. doi: [10.1001/archophthalmol.2011.63](#). [PubMed: [21555612](#)].
- Neely D, Harris A, Hynes E, McNulty L, McCranor L, Siesky B, et al. Longitudinal assessment of plus disease in retinopathy of prematurity using color Doppler imaging. *J AAPOS*. 2009;13(5):509-11. doi: [10.1016/j.jaapos.2009.08.012](#). [PubMed: [19840734](#)].
- Chiang MF, Jiang L, Gelman R, Du YE, Flynn JT. Interexpert agreement of plus disease diagnosis in retinopathy of prematurity. *Arch Ophthalmol*. 2007;125(7):875-80. doi: [10.1001/archophth.125.7.875](#). [PubMed: [17620564](#)].
- Wallace DK, Quinn GE, Freedman SF, Chiang MF. Agreement among pediatric ophthalmologists in diagnosing plus and pre-plus disease in retinopathy of prematurity. *J AAPOS*. 2008;12(4):352-6. doi: [10.1016/j.jaapos.2007.11.022](#). [PubMed: [18329925](#)]. [PubMed Central: [PMC2605610](#)].
- Reynolds JD, Dobson V, Quinn GE, Fielder AR, Palmer EA, Saunders RA, et al. Evidence-based screening criteria for retinopathy of prematurity: natural history data from the CRYO-ROP and LIGHT-ROP studies. *Arch Ophthalmol*. 2002;120(11):1470-6. doi: [10.1001/archophth.120.11.1470](#). [PubMed: [12427059](#)].
- Dimitrova G. Color Doppler imaging of ocular and orbital blood vessels in retinal disease. *Eur Ophthalmic Rev*. 2013;6(1):1-9.
- MacKinnon JR, McKillop G, O'Brien C, Swa K, Butt Z, Nelson P. Colour Doppler imaging of the ocular circulation in diabetic retinopathy. *Acta Ophthalmol Scand*. 2000;78(4):386-9. doi: [10.1034/j.1600-0420.2000.078004386.x](#). [PubMed: [10990037](#)].
- Rankin SJ. Color Doppler imaging of the retrobulbar circulation in glaucoma. *Surv Ophthalmol*. 1999;43 Suppl 1:S176-82. doi: [10.1016/s0039-6257\(99\)00043-0](#). [PubMed: [10416761](#)].
- Williamson TH, Harris A. Color Doppler ultrasound imaging of the eye and orbit. *Surv Ophthalmol*. 1996;40(4):255-67. doi: [10.1016/s0039-6257\(96\)82001-7](#). [PubMed: [8658337](#)].
- Holland DR, Saunders RA, Kagemann LE, Bluestein EC, Hutchinson AK, Corson DW, et al. Color doppler imaging of the central retinal artery in premature infants undergoing examination for retinopathy of prematurity. *J AAPOS*. 1999;3(4):194-8. doi: [10.1016/s1091-8531\(99\)70002-9](#). [PubMed: [10477220](#)].
- Naderian GA, Moulavi VH, Hadipour M, Sajadi V. Prevalence and risk factors for retinopathy of prematurity in Isfahan. *Bina J Ophthalmol*. 2010;15(3):208-13.
- Soares CR, Silveira RC, Procianny RS. Ophthalmic artery blood flow in very-low-birth-weight preterm infants. *Invest Ophthalmol Vis Sci*. 2010;51(2):708-11. doi: [10.1167/jovs.09-4206](#). [PubMed: [19737883](#)].
- Bittner M, Faes L, Boehni SC, Bachmann LM, Schlingemann RO, Schmid MK. Colour Doppler analysis of ophthalmic vessels in the diagnosis of carotid artery and retinal vein occlusion, diabetic retinopathy and glaucoma: systematic review of test accuracy studies. *BMC Ophthalmol*. 2016;16(1):214. doi: [10.1186/s12886-016-0384-0](#). [PubMed: [27927176](#)]. [PubMed Central: [PMC5142387](#)].
- Papacci P, Romagnoli C, Favuzzi A, Luciano R, Giannini R, De Carolis MP, et al. Doppler ultrasound of blood flow velocities in ophthalmic and central retinal arteries during the early neonatal period. *Am J Ophthalmol*. 1998;126(5):691-7. doi: [10.1016/s0002-9394\(98\)00203-7](#). [PubMed: [9822233](#)].
- Guthoff RF, Berger RW, Winkler P, Helmke K, Chumbley LC. Doppler ultrasonography of the ophthalmic and central retinal vessels. *Arch Ophthalmol*. 1991;109(4):532-6. doi: [10.1001/archophth.1991.01080040100037](#). [PubMed: [2012556](#)].
- Lieb WE, Cohen SM, Merton DA, Shields JA, Mitchell DG, Goldberg BB. Color Doppler imaging of the eye and orbit. Technique and normal vascular anatomy. *Arch Ophthalmol*. 1991;109(4):527-31. doi: [10.1001/archophth.1991.01080040095036](#). [PubMed: [2012555](#)].
- Rojanapongpun P, Drance SM. Velocity of Ophthalmic Arterial Flow Recorded by Doppler Ultrasound in Normal Subjects. *Am J Ophthalmol*. 1993;115(2):174-80. doi: [10.1016/s0002-9394\(14\)73921-2](#).
- Kaiser HJ, SchoTzau A, Flammer J. Blood-Flow Velocities in the Extraocular Vessels in Normal Volunteers. *Am J Ophthalmol*. 1996;122(3):364-70. doi: [10.1016/s0002-9394\(14\)72063-x](#).
- Hauch C, Harris A, Jonescu-Cuypers C, Siesky B, McCranor L, Kaesmann-Kellner B, et al. Ocular Blood Flow Changes in Retinopathy of Prematurity With Plus Disease as Measured by Color Doppler Imaging. *Invest Ophthalmol Visual Sci*. 2007;48(13):3095.
- Ozcan PY, Dogan F, Sonmez K, Con R, Dokumaci DS, Seyhanli ES. Assessment of orbital blood flow velocities in retinopathy of prematurity. *Int Ophthalmol*. 2017;37(4):795-9. doi: [10.1007/s10792-016-0333-1](#). [PubMed: [27591784](#)].
- Niwald A, Gralek M. Evaluation of blood flow in the ophthalmic artery and central retinal artery in children with retinopathy of prematurity. *Klin Oczna*. 2006;108(1-3):32-5. [PubMed: [16883936](#)].
- Adeyinka OO, Olugbenga A, Helen OO, Adebayo AV, Rasheed A. Ocular blood flow velocity in primary open angle glaucoma-a tropical African population study. *Middle East Afr J Ophthalmol*. 2013;20(2):174-8. doi: [10.4103/0974-9233.110617](#). [PubMed: [23741138](#)]. [PubMed Central: [PMC3669496](#)].